

rehlko

Kohler Engines
is now Rehlko



Command® SH270

Gasoline Engines

4.8 kW | 6.5 hp

Discover the configurable solution
for all the equipment in your fleet.



Designed for the *consumer.* Built for the *pro.*

Tough as nails. The hard-working KOHLER® SH Series™ engine is designed for quick, easy maintenance. Heavy-duty features like a cast-iron cylinder liner give consumers the same engine protection the pros need. Larger displacement results in more power. Built to last, so you get more hours out of your equipment.

Popular factory options

12-Volt starter

Exhaust deflector

Spark arrestor

3- And 10-Amp
charging systems

Crankshaft/pto variations
(keyed, tapered, threaded)

Low-profile air cleaner
and muffler (generator)

EU noise-compliant

Oil sentry™ automatic
low-oil shutdown system

EMC/RFI-compliant

Fuel secure™ auto
fuel shutoff



Added protection with oil sentry™
automatic low-oil shutdown
system

Built to last with heavy-duty
crankshaft and cast-iron cylinder
liner



Effortless starts with large
indexable recoil starter and dual
ball bearings

Smooth operation from reduced
noise and vibration

Stop less and work more with
large fuel tank



Easy maintenance and less
downtime with dual oil fills and
drains

Simple, easy-access controls
and no-tools-required air cleaner

SH Series

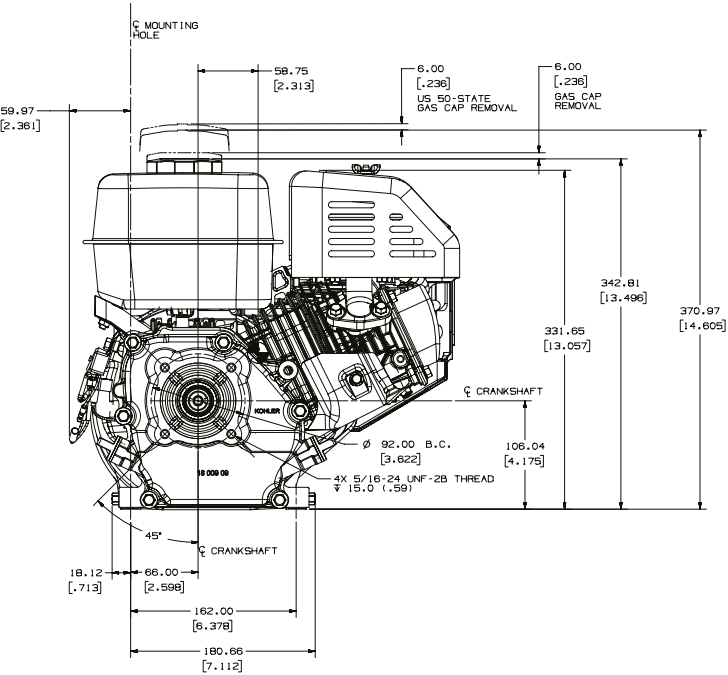
Standard features

OHV slant cylinder	Mechanical governor
Cast-iron cylinder liner	Sound-deadening alloy crankcase
Large-capacity metal Fuel tank	Dual ball bearings
In-neck fuel	Carburetor bowl drain
Debris screen	Dual oil fills and drains
Water trap in carburetor	Dual-element air cleaner
Electronic ignition	High-inertia flywheel
Quiet muffler with heat shield	Silenced air intake
Carb Tier 3-compliant	Indexable easy-pull™ recoil starter
Easy-access throttle, choke and fuel shutoff	Remote throttle (built-in)
Automatic compression release	2-Year consumer limited warranty

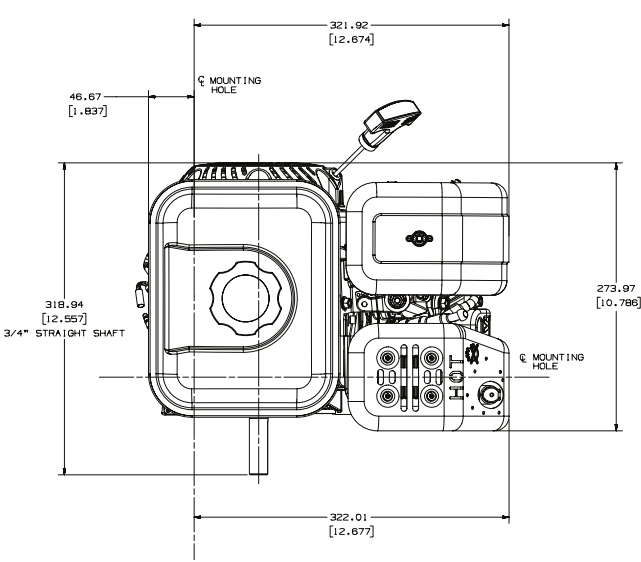


SH Series

6.5 HP Engines



PTO view



Top view

MODEL		SH270
POWER @ 3600 rpm	Max hp (kW)	6.5 (4.8)
DISPLACEMENT	cu in (cc)	12 (196)
BORE	in (mm)	2.7 (68)
STROKE	in (mm)	2.1 (54)
PEAK TORQUE @ rpm	ft-lb (Nm)	10.2 (13.8) @ 3000
COMPRESSION RATIO		8.5:1
DRY WEIGHT	lb (kg)	35.3 (16)
OIL CAPACITY	U.S. qt (L)	0.6 (0.6)
LUBRICATION		SPLASH
DIMENSIONS= L x W x H	in (mm)	9.9 x 14.5 x 14.6 (253 x 369 x 371)

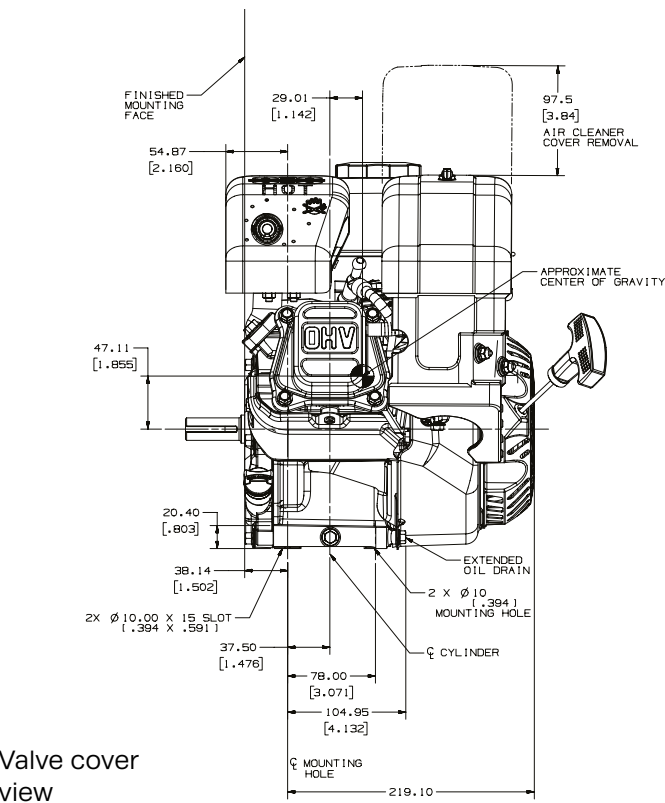
Four-cycle, single-cylinder, overhead valve, air-cooled, gasoline, horizontal shaft, aluminum head and crankcase with cast-iron cylinder liner.

*Horsepower ratings exceed Society of Automotive Engineers Small Engine Test Code J1940. Actual engine horsepower is lower and affected by, but not limited to, accessories (air cleaner, exhaust, charging, cooling, fuel pump, etc.), application, engine speed and ambient operating conditions (temperature, humidity and altitude). For more information, contact Kohler Co. Engine Engineering. Kohler reserves the right to change product specifications, designs and equipment without notice and without incurring obligation.

*Length is recoil starter to PTO mounting face. Height is with the USA 50 state evap fuel cap.

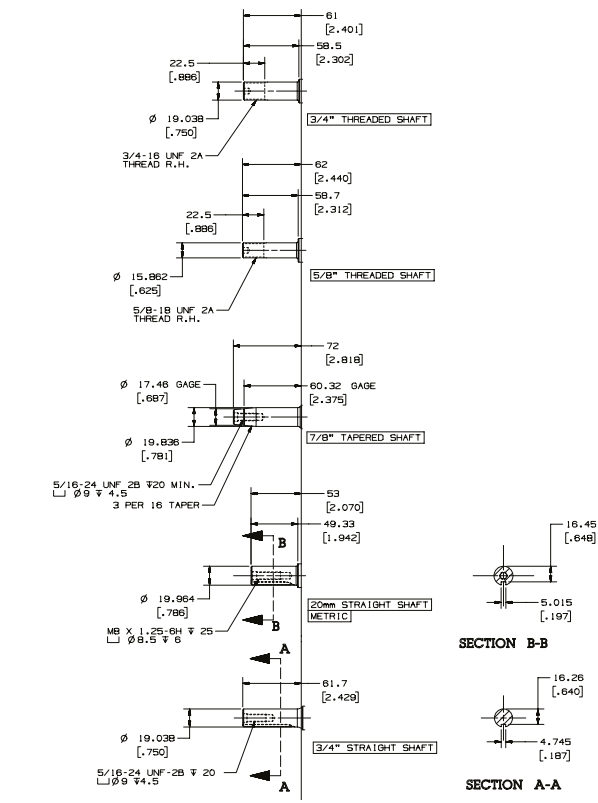
Data

Dimensions (mm)

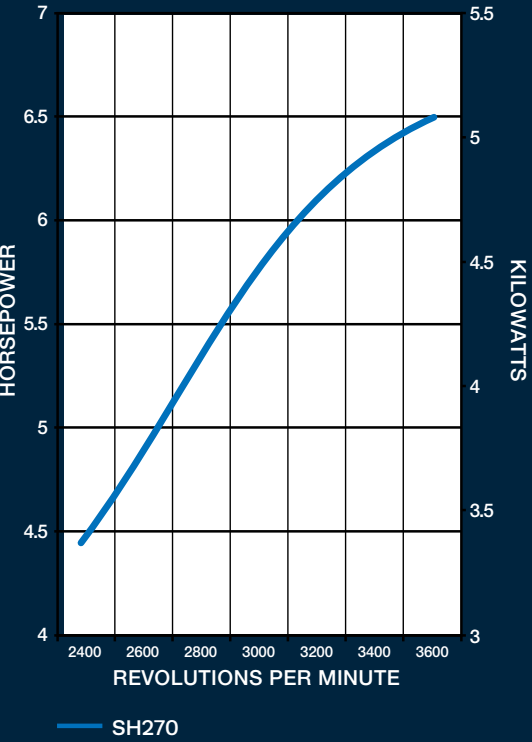


Valve cover view

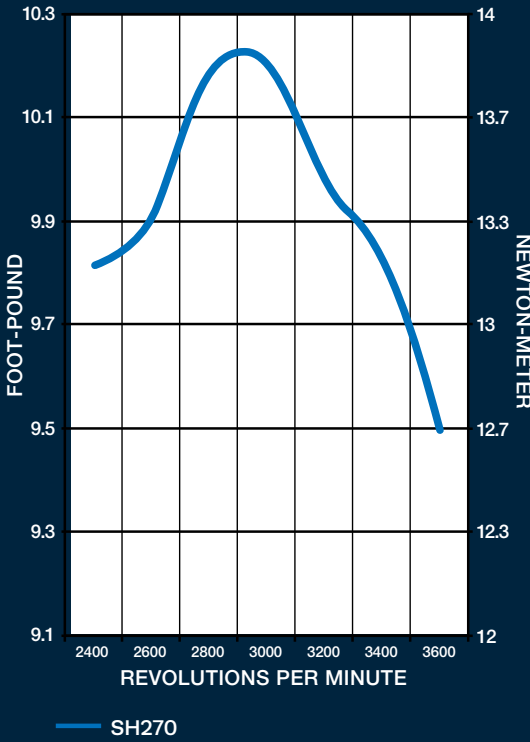
Shaft variations



Maximum power



Maximum torque





For more information, contact your Rehiko source of supply.
Discovery Energy, LLC reserves the right to make modifications without prior notice.

engines.rehiko.com

Printed in Italy ED0035583580 Rev.02 07/25 Eng Discovery Energy, LLC